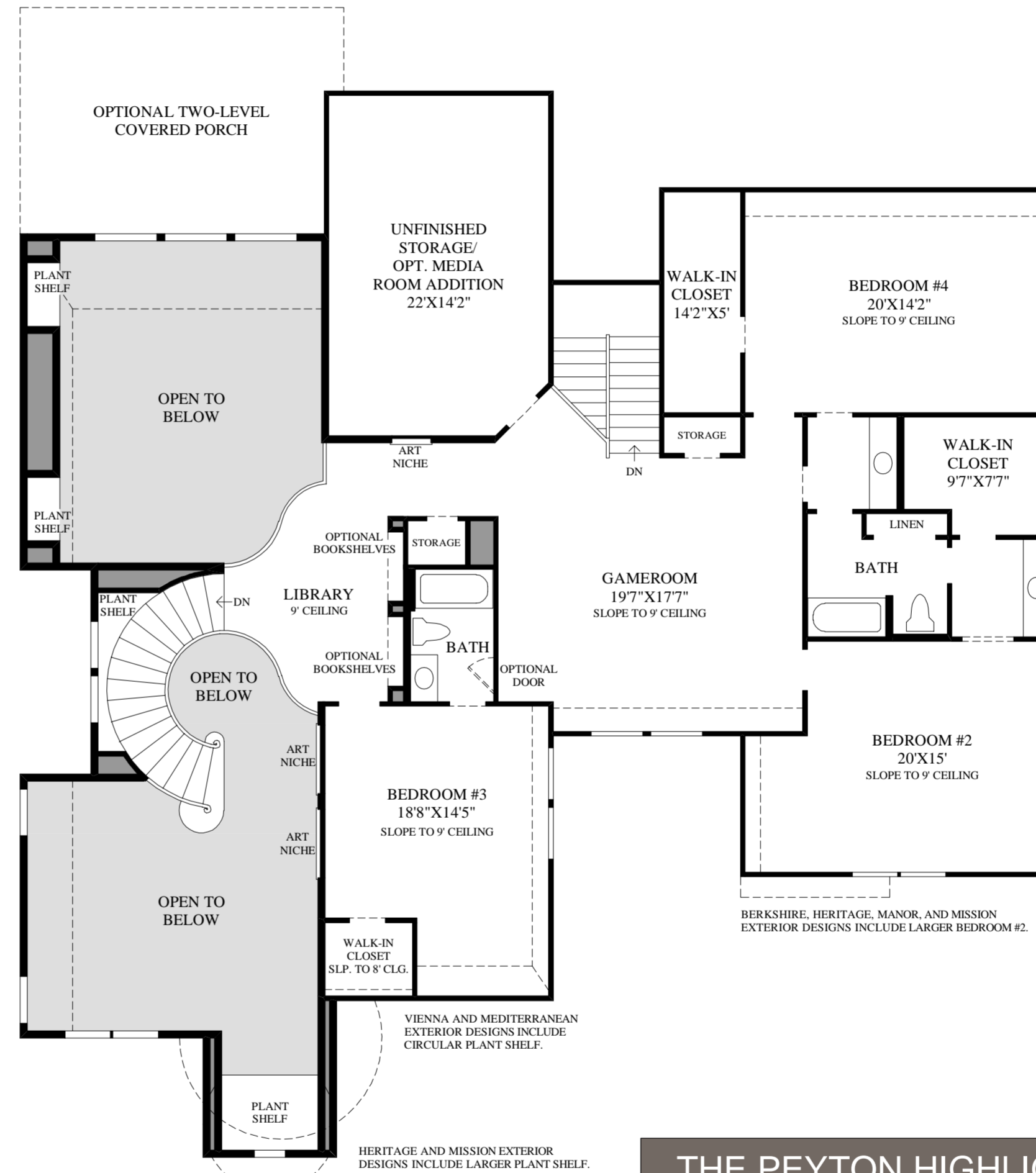
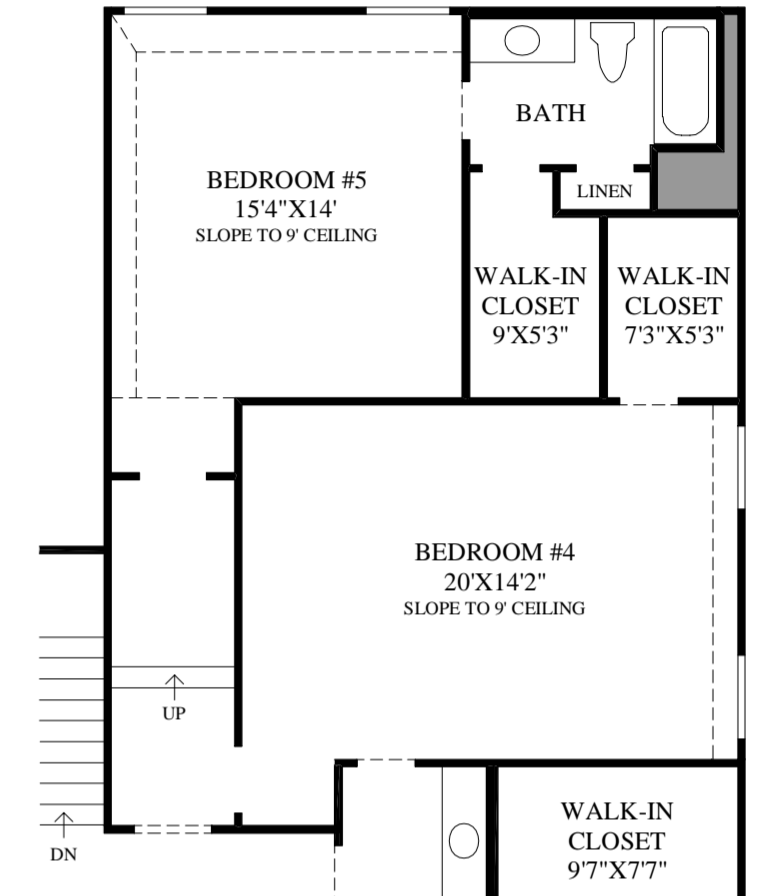


First Floor

VERSAILLES EXTERIOR DESIGN SHOWN



Second Floor



SHOWN WITH OPTIONAL FIFTH BEDROOM

THE PEYTON HIGHLIGHTS

- The dramatic two-story foyer and living room feature a beautiful curved staircase with an overlook from the library above.
- Appealing courtyard views enhance the impressive formal dining room.
- This well-appointed kitchen offers an island with a breakfast bar and an adjacent sunlit breakfast area that permits access to the covered porch.
- The two-story family room features soaring arched windows and a radiant fireplace that is balanced by arched-top plant shelves.
- Great for home office use is the regal first-floor study with a double-door entry.
- The stunning master bedroom reveals an 11' tray ceiling, two large walk-in closets, and a luxurious master bath that is complete with a corner glass-enclosed shower, a soaking tub, storage for linens, and dual vanities.
- Also included is a generous gameroom, which is the focal point of the second floor and perfect for entertaining.



TWO-STORY FOYER